



# Your number one fan

In our test of cooker hoods and extractor fans, we find that a good big one usually beats a good little one

In the world of cooker hoods and extractor fans, size matters. Large hoods may cost more than their smaller counterparts but they account for six of our seven Best Buys.

However, small can be beautiful, too. The Neff integrated model (13) is only 60cm wide, suitable for use with a traditional four-ring freestanding cooker or built-in hob, and performs admirably across the board.

Cooker hoods are used to extract the steam and smells from your kitchen. We've tested 25 models, ranging in price from £64 to £799. We've looked at freestanding hoods for smaller kitchens, integrated and built-in hoods for fitted kitchens, as well as larger island and fashionable chimney models for bigger kitchens.

Most of the cooker hoods we tested were good at extracting odours and grease. The greatest difference in performance between the Best Buys and the rest comes when extracting steam. Steam rises more quickly than grease and odours, so, more than likely, you'll need a big island or chimney hood to keep your kitchen steam free. Only three of the 13 integrated, built-in or freestanding models performed well when it came to steam extraction.

As you can see, hoods come in all shapes and sizes and we have tested the sizes most popular with consumers (see 'How to buy', below). But remember, while bigger may be better, the extractor fan you choose needs to be right for your kitchen, your cooker and your budget.

**You'll need a big hood to keep your kitchen steam free**



**Extracting the information from the cooker hoods**

## Steamy windows

We boil four pans of water on a hob until humidity levels reach 90 per cent in our test room. We then put the hoods to work and measure how quickly they can reduce the humidity by 30 per cent. Seven of the smaller hoods couldn't manage this in the eight minutes allowed.

## Noise and the hood

We measure the noise made by each hood using a sound-level meter. Our panel of experts also listens for any strange sounds, rattles or vibrations.

## Grease is the word

First, we weigh the hoods' grease filters. We then drip vegetable oil and water into a hot pan to create a greasy atmosphere. We record how much grease has been caught in the filters by weighing them again after 30 minutes.

## Odour eaters

We drip water and the pungent chemical methyl ethyl ketone, which smells like nail varnish remover, into a hot pan to make the test chamber smelly and record the odour particles found in the air at four points around the room. We then turn on the hoods for 30 minutes and measure the odour reduction.



## How to buy

### Choosing the right type of hood for your kitchen

Fans of Channel 4's *Property Ladder* know that looks matter and a new kitchen with a range cooker (see 'Take a range check', p61) and hood can help sell your home. But it's vital your choice of hood matches your kitchen and cooker.



### Built-in

Compact, at just 52 to 60cm wide, these are designed to fit into any kitchen unit or cabinet of the appropriate size. Built-in hoods are suitable for use with a traditional four-ring cooker.

### Chimney

Chimney-style hoods are 90cm across, made of stainless steel and glass and comprise a canopy to capture the steam and smells and a chimney fitted with a fan to extract them. Fitted to the wall, they look good and work well with six-ring range cookers.

### Freestanding

This type should be fitted directly to the wall above a four-

ring hob. These were the least powerful hoods we tested.

### Integrated

These are designed to fit snugly into integrated kitchen units. They are not as powerful as chimney or island models and are suitable for use with a four-ring cooker or hob.

### Island

These are the biggest hoods and are available at between 90 and 100cm wide. They are also the most powerful. They attach directly to the ceiling, so you'll need a big kitchen with a lot of space to accommodate an island hood. They're suitable for use with a range cooker (see our report on p61).

**1 ISLAND**

## 84% Neff D91M5N0GB £744

This attractive island hood is packed full of features we like. The large glass canopy is easy to clean and the four lights are well positioned, two front and two back, giving you plenty of light to cook in. It's good at getting rid of steam and smells from cooking and fantastic when extracting grease. Available online.

**WE LIKE** The position of the controls on the outside and at the front makes it easy to use.

Available Online Number of speeds Three  
Grease filter Stainless steel

**WHICH?  
BEST  
BUY**
**2 ISLAND**

## 73% Elica Glacier Island £756

This large island model from Elica does its extracting job well. Both the stainless steel chimney and the glass canopy are very easy to clean. The front-facing controls are conveniently positioned and easy to use. Available from Comet.

**WE LIKE** The helpful indicator lights on the front tell you the speed the fan is operating at.

Cheapest store Comet Number of speeds Three  
Grease filter Stainless steel

**WHICH?  
BEST  
BUY**

## What you should look for

### EXTRACTION

Hoods can be set up to extract air through a duct to a vent in your wall or to pass air through carbon filters before recirculating back into your kitchen. Extraction mode is more effective at getting rid of steam, smells and grease

### CONTROLS

Hoods with the controls on the front are easier to use than those with the controls on the underside

### CANOPY

Glass canopies are easier to clean than those made of stainless steel. It's also easier to see when they are dirty

### GREASE FILTERS

These can be made of aluminium, stainless steel or fleece material. They catch the grease as it rises from your hob

## Which should you choose?

### Best for a small kitchen

**BAUMATIC CAN54 £121 ONLINE** If the estate agent told you your kitchen was 'bijou', you probably now know it's just small. If space is tight, this built-in model (17) at only 52cm wide would be best for you.

### Best for a tight budget

**NEFF D2654X0GB £131 ONLINE** If you've got less than £150 to spend, this integrated Neff (13)

is your best bet. You'll find cheaper integrated, freestanding and built-in hoods, but none is as good at extracting steam as this.

### Best for a quiet life

**NEFF D91M5N0GB £744 ONLINE** (pictured right) and **WHIRLPOOL AKR 958 £499**

Some hoods are certainly quieter than others. The island-style Neff (1) and chimney-style Whirlpool (7) are the quietest of the hoods we tested and both are Best Buys.

## How to install a cooker hood

### We examine the options available for getting your hood fitted

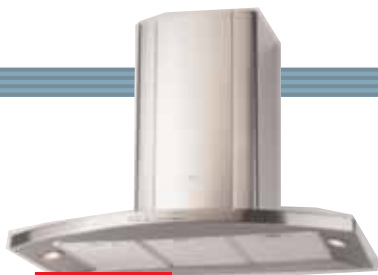
Retailers don't offer a free hood-fitting service, so you'll need to pay them, do it yourself or hire a qualified electrician.

You can find a lot of helpful advice on hood manufacturers' websites. John Lewis and Elica both provide detailed information. John Lewis includes a postcode-driven search engine on its website to help you find a local installer.

In England and Wales, you don't need to notify your local authority if you're replacing your hood or installing a new one that will use an existing power supply. However, if a new or replacement hood is being installed with a new

power supply, Part P of the building regulations will apply and you will have to notify the local building control office. If the work is done by a qualified electrician with certification to prove that his qualification exempts him from notification, you won't need to notify the local authority.

In Scotland, you should use a certified electrician if the job is covered by a building warrant – Select and NICEIC are the organisations to contact about this. In Northern Ireland there are no similar regulations. See 'Contacts', p68, for full details of organisations.



5 CHIMNEY

## 75% AEG-Electrolux HC5690M £281

This AEG is very good at sucking out grease, smells and steam and isn't very noisy. Keeping it clean is the only letdown. It's stainless steel throughout, so buffing it up takes some elbow grease. Available from Comet.

WHICH?  
BEST BUY

**WE LIKE** Changing the light bulb is made easy by the use of a spring-release casing.

Cheapest store Comet Number of speeds Three  
Grease filter Stainless steel



6 CHIMNEY

## 75% Belling DCH900 £383

This chimney hood makes short work of the grease and smells thrown up when cooking. It's made of stainless steel and glass and we found it very easy to clean with soapy water. Available online.

WHICH?  
BEST BUY

**WORTH KNOWING** The Belling is excellent at removing steam.

Available Online Number of speeds Three Grease filter Stainless steel



7 CHIMNEY

## 74% Whirlpool AKR 958 £499

This hood has three speeds and is excellent at extracting grease and good at removing odours. But it's not so hot at clearing steam – lots of condensation built up on the underside of the chimney. Available from Comet and B&Q.

WHICH?  
BEST BUY

**WE LIKE** This was the quietest of all of the chimney hoods we tested.

Cheapest store B&Q Number of speeds Three  
Grease filter Stainless steel

Hoods with glass canopies are easier to clean than 100 per cent stainless steel models



8 CHIMNEY

## 71% Stoves 900DCP £374

This large hood comes in stainless steel or black. The underside is made up of three large filters surrounded by a thin stainless steel rim. This allows it to capture and extract more of the grease and steam produced while cooking. Available online.

WHICH?  
BEST BUY

**WE LIKE** It's easy to clean, with fewer surfaces for grease to gather on.

Available Online Number of speeds Three  
Grease filter Stainless steel



13 INTEGRATED

## 73% Neff D2654X0GB £131

This impressive hood sets the standard for integrated models. It's great at extracting steam – unusual for a small hood. It clears grease and odours without making much noise. Its only weakness is the controls, which are hard to see and reach. Available online.

WHICH?  
BEST BUY

**WORTH KNOWING** The filters need to be washed every eight to ten weeks.

Available Online Number of speeds Three  
Grease filter Stainless steel

## Looking after your hood

### How to get the best out of your extractor

#### Filter tips

Your biggest maintenance task will be to keep the filters clean. Metal filters are easy to remove and clip in and out of the underside of the hood. They're dishwasherproof and, unlike fleece filters, won't need replacing. You'll need to wash metal filters every four to eight weeks.

Removing a fleece filter can be messy, so if you don't like getting your hands dirty, choose metal filters. Fleece filters will need to be replaced every two months. Some hoods come with a handy saturation indicator that

tells you when the filter should be changed or washed. Manufacturers supply replacements. Be specific about the type that you need, as we were sent the wrong ones more than once.

#### Cleaning up

To clean stainless steel use warm soapy water. Hoods with a glass canopy are easier to keep clean than 100 per cent stainless steel models. Hoods with thinner underside rims and bigger filters don't get as dirty, as more of the grease ends up in the filters than on the surround.

## Contacts

### AEG-Electrolux

0870 605 5055; [www.aeg-electrolux.co.uk](http://www.aeg-electrolux.co.uk)  
B&Q 0845 609 6688; [www.diy.com](http://www.diy.com)

Baumatic 0118 9336 900  
[www.baumatic.co.uk](http://www.baumatic.co.uk)

Belling 0871 222 2503; [www.belling.co.uk](http://www.belling.co.uk)

Bosch 0870 240 0060  
[www.boschappliances.co.uk](http://www.boschappliances.co.uk)

Britannia 0800 073 1003; [www.britannialiving.co.uk](http://www.britannialiving.co.uk)  
Elica 01252 351111; [www.elica.co.uk](http://www.elica.co.uk)

Hotpoint 0870 442 7665; [www.hotpoint.co.uk](http://www.hotpoint.co.uk)

John Lewis 0845 604 9049; [www.johnlewis.com](http://www.johnlewis.com)

Neff 0870 241 3383; [www.neff.co.uk](http://www.neff.co.uk)

New World 0870 458 4378; [www.gdha.com](http://www.gdha.com)

Rangemaster 0870 789 5107  
[www.rangemaster.co.uk](http://www.rangemaster.co.uk)

Stoves 0870 444 9929;  
[www.stoves.co.uk](http://www.stoves.co.uk)

Whirlpool 0870 600 8989  
[www.whirlpool.co.uk](http://www.whirlpool.co.uk)

### FINDING A QUALIFIED INSTALLER

BRE Certification Ltd 01923 664100  
[www.brecertification.co.uk](http://www.brecertification.co.uk)

British Standards Institution 0845 076 5600  
[www.bsi-global.com/kitemark](http://www.bsi-global.com/kitemark)

ELECSA Limited 0870 749 0080; [www.elecsa.org.uk](http://www.elecsa.org.uk)

NAPIT Certification Ltd 0870 444 1392; [www.napit.org.uk](http://www.napit.org.uk)

NICEIC Certification Ltd 0870 013 0382; [www.niceic.org.uk](http://www.niceic.org.uk)

Select (Scotland's electrical trade association) 0131 445 5577; [www.select.org.uk](http://www.select.org.uk)

MODEL	SPECIFICATION			WHICH? TEST PERFORMANCE						SCORE %
	PRICE (£)	FILTER	WIDTH (cm)	GREASE EXTRACTION	ODOUR EXTRACTION	STEAM EXTRACTION	NOISE	QUALITY OF CONSTRUCTION	EASE OF USE	
ISLAND										
1 NEFF D91M5N0GB	744	M	90	★★★★★	★★★★★	★★★★★	★★★★★	★★★★★	★★★★★	84
2 ELICA Glacier Island	756	M	100	★★★★★	★★★★★	★★★★★	★★★★	★★★★★	★★★★★	73
3 JOHN LEWIS JLB1HD	799	M	100	★★	★★★★★	★★★★★	★★★★★	★★★★★	★★★★★	68
4 BAUMATIC ISL92.1	498	M	90	★★★★★	★★★★★	★★	★★★★★	★★★★★	★★★★★	63
CHIMNEY										
5 AEG ELECTROLUX HC5690M	281	M	90	★★★★★	★★★★★	★★★★★	★★★★★	★★★★★	★★★★★	75
6 BELLING DCH900	383	M	90	★★★★★	★★★★★	★★★★★	★★★★★	★★★★★	★★★★★	75
7 WHIRLPOOL AKR 958	499	M	90	★★★★★	★★★★★	★★★	★★★★★	★★★★★	★★★★	74
8 STOVES 900DCP	374	M	90	★★★★★	★★★★★	★★★★★	★★★★	★★★★★	★★★★	71
9 ELICA Aqua	180	M	90	★★★★★	★★★★★	★★★★★	★★★★	★★★★★	★★★★	69
10 BRITANNIA K 7088 ASC	689	M	100	★★★★★	★★★★★	★★★★★	★	★★★★★	★★★★★	66
11 NEFF D8912NOGB	300	M	90	★★★★★	★★★★★	★★★	★★★★	★★★★★	★★★★★	65
12 RANGEMASTER Classic Chimney Hood (63050)	311	M	90	★★★★★	★★★★★	★★★★★	★★★★	★★★★★	★★★★	65
INTEGRATED										
13 NEFF D2654X0GB	131	M	60	★★★★★	★★★★★	★★★★★	★★★★★	★★★★★	★★★★★	73
14 BAUMATIC BT08.6	84	F	60	★★★★★	★★★★★	★★★★★	★★	★★★★★	★★★★	64
15 B&Q HDI60SV	69	M	60	★★★★★	★★★★★	★	★★★★★	★★★★★	★★★★	54
16 NEW WORLD 600INT	99	M	60	★★★★★	★★★★	★	★★★★★	★★★★★	★★★★	52
BUILT IN										
17 BAUMATIC CAN54	121	M	52	★★★★★	★★★★	★★★★★	★★	★★★★★	★★★★★	66
18 ELICA Built-in 60 Super Twin	99	M	52	★★★★★	★★★★	★★	★★★★	★★★★★	★★★★★	61
19 BOSCH DHL 535B GB	70	F	52	★★★★★	★★★★	★	★★★★★	★★★★★	★★★★★	60
20 WHIRLPOOL AKR 769	114	M	52	★★★★★	★★	★	★★★★★	★★★★★	★★★★	56
21 BELLING CCH543	109	F	52	★★★★★	★★	★	★★★★★	★★★★★	★★★★	51
FREESTANDING										
22 WHIRLPOOL AKR 400	93	M	60	★★★★★	★★★★★	★	★★★★★	★★★★★	★★★★	56
23 ELICA Chic	64	F	60	★★★★★	★★★★	★	★★★★	★★★★★	★★★★	54
24 HOTPOINT HTV10	80	F	60	★★★★★	★★★★	★	★★★★	★★★★★	★★★★★	53
25 NEFF D1613-0GB	90	F	60	★★★★★	★★★★★	★	★★★★	★★★★★	★★★★	53

**USING THE TABLE**

We tested 25 cooker hoods from leading manufacturers. The more stars the better.

**Specification**

**Price** For Best Buys we give the cheapest widely available high-street price as we went to press. Prices for other models

are a guide. Prices for models available only online are in *italics*.

**Filter** The type of grease filter required. F = fleece, M = metal.

**Test performance**

**Grease extraction/Odour extraction** How effectively grease and odours were removed.

**Steam extraction** How well steam

was removed. ★★★★★ means the steam was cleared easily. ★ means the hood didn't remove enough steam and failed this test.

**Noise** How noisy the hood is.

★★★★★ is equivalent to normal conversation, ★ is comparable to a vacuum cleaner or hairdryer.

**Quality of construction** How well built the hood is and how scratch

resistant the surfaces are.

**Ease of use** How easy the hood is to clean, maintain and use.

**Score**

This ignores price and is based on Performance **45%**  
Ease of use **30%**  
Noise **20%**  
Quality of construction **5%**