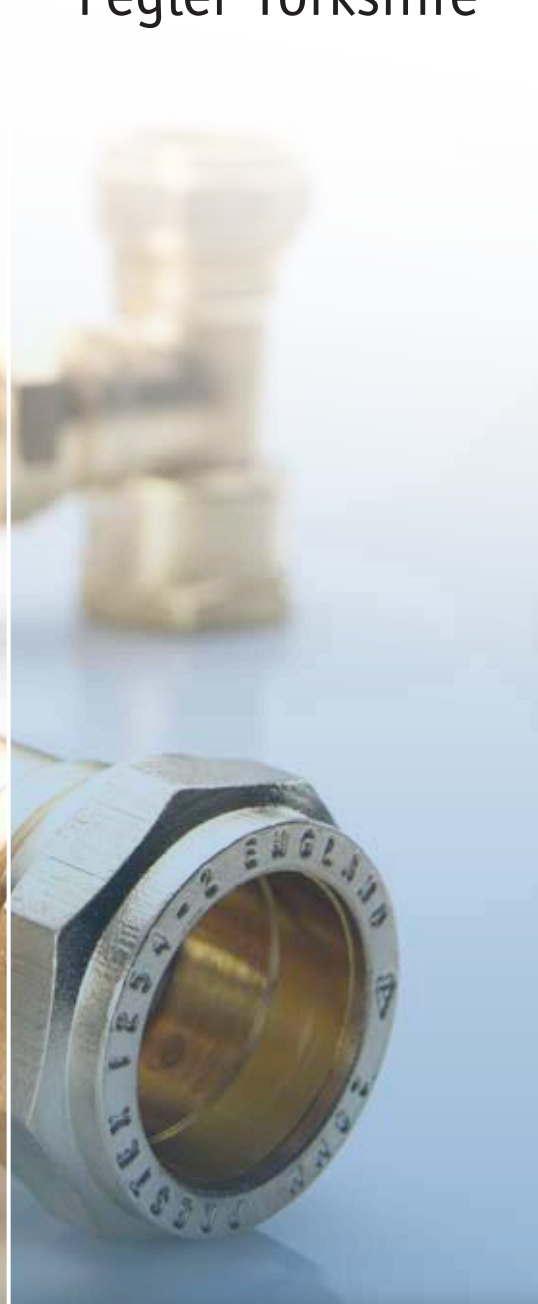


CONNECT + CONTROL



Pegler Yorkshire



# COMPRESSION PLUMBING SOLUTIONS

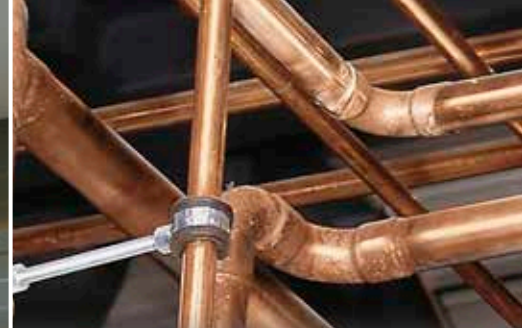
CONNECT WITH CONFIDENCE

***Prestex***





Pegler Yorkshire



# CONNECT WITH CONFIDENCE

With a wealth of expertise and the broadest range of solutions and systems on the market, Pegler Yorkshire's **Connect** products mean you'll complete your installation as seamlessly, efficiently and effectively as possible.

## TOTAL FUNCTIONALITY, COMPLETE EFFICIENCY

Pegler Yorkshire's range of **Connect** solutions offer innovatively designed, efficient and reliable products and systems that reduce installation time and cost without compromising quality, aesthetics or reliability.

Our **Tectite**, **Henco** and **XPress** product ranges are designed to perform faultlessly in a variety of applications and environments – so you can always be sure to connect with confidence whatever your challenge.

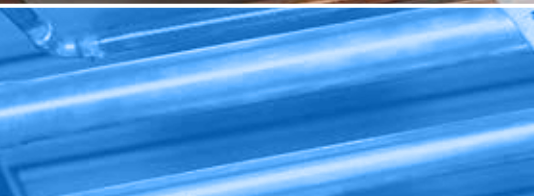
## GLOBAL EXPERIENCE, COMBINED EXPERTISE

With over 100 years of manufacturing and innovation combined with extensive industry knowledge and worldwide market experience, Pegler Yorkshire offers the most advanced and complete **Connect & Control** systems on a global scale.

As one of Britain's largest and most respected manufacturers and suppliers of products for the plumbing and heating industries, Pegler Yorkshire is confident we can provide you with all the connection, control and support your project needs.

For more information visit  
[www.pegler-yorkshire.co.uk](http://www.pegler-yorkshire.co.uk)





# Prestex

CONNECT + CONTROL

## CONTENTS

FEATURES

4

PRODUCT RANGE

4-6

TECHNICAL DATA

7

*Pegler Yorkshire is pleased to be associated with several influential industry organisations:*



**Brass**

The Brass Page for specifiers, designers, engineers and manufacturers







### FEATURES

- ✚ Prestex is the ideal solution for virtually all domestic and commercial applications
- ✚ With Prestex compression fittings you're safe and secure in the knowledge that the range is designed, manufactured and tested to meet UK and international standards as in EN1254
- ✚ Compression sizes 8 – 54mm with male and female adapters/connections for a wide range of installation requirements.
- ✚ Prestex fittings are available in brass plate finish or chromium plate.
- ✚ The kite mark is carried by the vast majority of the fittings range give assurance of quality in manufacture and standards compliance.
- ✚ Suitable for use with copper tube to EN1254: Part 2 and stainless steel tube to EN10312, GW341 (formerly BS4127: 1994)

### 35

Flanged Tank Connector  
Copper x flange and backnut



Size	Code	
	Brass	Chrome
15mm	704007	
22mm	704008	
28mm	704009	
35mm	704010	
42mm	704011	
54mm	704012	

### 37

Stop End  
Copper x blank end



Size	Code	
	Brass	Chrome
15mm	707007	7B3007
22mm	707008	
28mm	707009	

### 37A

Blanking Off Disc



Size	Code	
	Brass	Chrome
15mm	744007	7B3100
22mm	744008	
28mm	744009	

### 40

Straight Coupling  
Copper x copper



Size	Code	
	Brass	Chrome
8mm	709004	
10mm	709005	
10x8mm	709015	
15mm	709017	7B4007
15x8mm	709027	
15x10mm	709037	
15x12mm	709047	
18x15mm	709056	
22mm	709058	7B4028
22x15mm	709068	
28mm	709079	7B4029
28x22mm	709089	
35mm	709100	
42mm	709101	
54mm	709102	

### 40CO

Crossover  
Coupling  
Copper x copper



Size	Code	
	Brass	Chrome
15mm	732007	
22mm	732008	

### 40R

Repair Coupling  
100mm long (slip)  
Copper x copper



Size	Code	
	Brass	Chrome
15mm	732001	

### 41

Straight Coupling  
Copper x female iron



Size	Code	
	Brass	Chrome
8mmx1/4	710004	
10mmx1/4	710005	
10mmx3/8	710015	
10mmx1/2	710025	
15mmx1/4	710027	
15mmx3/8	710037	
15mmx1/2	710047	7B5007
15mmx3/4	710057	
22mmx1/2	710058	
22mmx3/4	710068	7B5008
22mmx1	710078	
28mmx1	710079	7B5009
35mmx1.1/4	710080	
42mmx1.1/2	710081	
54mmx2	710082	



## 42

Straight Coupling  
Copper x male  
iron



Code		
Size	Brass	Chrome
8mmx1/4	711004	
10mmx1/4	711005	
10mmx3/8	711015	
10mmx1/2	711025	
15mmx1/4	711047	
15mmx3/8	711057	
15mmx1/2	711067	7B6027
15mmx3/4	711077	
22mmx1/2	711028	
22mmx3/4	711038	7B6048
22mmx1	711048	
28mmx3/4	711049	
28mmx1	711059	7B6059
28mmx1.1/4	711069	
35mmx1	711070	
35mmx1.1/4	711080	
42mmx1.1/2	711081	
54mmx2	711082	

## 42W

Straight Coupling  
Copper x male  
iron 38mm (1.1/2")  
screw with backnut



Code		
Size	Brass	Chrome
15mmx1/2	712007	
22mmx3/4	712008	
28mmx1	712009	

## 43

Straight Swivel  
Tap Connector  
Copper x union  
nut



Code		
Size	Brass	Chrome
15mmx1/2	713007	7B7007
15mmx3/4	713017	
22mmx3/4	713018	7B7008

## 43B

Bent Swivel  
Tap Connector  
Copper x union  
nut



Code		
Size	Brass	Chrome
15mmx1/2	714007	7B8017
22mmx3/4	714008	

## 44

Elbow  
Copper x copper



Code		
Size	Brass	Chrome
8mm	715004	
10mm	715005	
15mm	715007	7B9007
22mm	715008	7B9008
22x15mm	715018	
28mm	715019	7B9009
28x15mm	715012	
28x22mm	715013	
35mm	715020	7B9010
42mm	715021	
54mm	715022	

## 45

Elbow  
Copper x male  
iron



Code		
Size	Brass	Chrome
15mmx1/2	717017	7C1007
22mmx1/2	717037	
22mmx3/4	717018	
22mmx1	717028	
28mmx1	717029	
35mmx1.1/4	717030	
42mmx1.1/2	717031	
54mmx2	717032	

## 45TP

Elbow  
Copper x male  
iron taper



Code		
Size	Brass	Chrome
15mmx1/2	717087	

## 45W

Elbow  
Copper x male iron  
38mm (1.1/2")  
screw with backnut



Code		
Size	Brass	Chrome
22mmx3/4	719008	

## 46

Elbow  
Copper x female  
iron



Code		
Size	Brass	Chrome
15mmx3/8	720007	
15mmx1/2	720017	7C2007
15mmx3/4	720027	
22mmx1/2	720028	
22mmx3/4	720038	
22mmx1	720048	
28mmx3/4	720095	
28mmx1	720049	
35mmx1.1/4	720050	
42mmx1.1/2	720051	
54mmx2	720052	

## 50

Equal Tee  
All ends for copper



Code		
Size	Brass	Chrome
10mm	721005	
15mm	721007	7C3007
22mm	721008	7C3008
28mm	721009	7C3009
35mm	721010	
42mm	721011	
54mm	721012	

## 50A

Tee - Both Ends  
Reduced  
All ends for copper



Code		
Size	Brass	Chrome
15x22mm	722007	



### 50B

Tee - One End Reduced  
All ends for copper



Code		
Size	Brass	Chrome
22x15mm	723008	
28x15mm	723009	
28x22mm	723019	

### 50C

Tee - Branch Reduced  
All ends for copper



Code		
Size	Brass	Chrome
22x15mm	724008	7C6008
28x15mm	724009	7C6009
28x22mm	724019	

### 50D

Tee - One End and Branch Reduced  
All ends for copper



Code		
Size	Brass	Chrome
22x15mm	725008	

### 52

Tee  
Copper x female iron end



Code		
Size	Brass	Chrome
15mmx1/2	727007	
22mmx1/2	727008	
22mmx3/4	727018	

### 54

Tee  
Copper x female iron branch



Code		
Size	Brass	Chrome
15mmx1/2	728007	
22mmx1/2	728008	
22mmx3/4	728018	
28mmx1/2	728019	
28mmx3/4	728039	
28mmx1	728049	

### 54X

Tee with Bracket  
Copper x female iron branch



Code		
Size	Brass	Chrome
15mmx1/2	729007	

### 57X

Bibtap Wall Flange (3 Hole)  
Copper x female iron



Code		
Size	Brass	Chrome
15mmx1/2	7B2007	

### 58X

Bibtap Wall Flange (2 Hole)  
Copper x female iron



Code		
Size	Brass	Chrome
15mmx1/2	730007	7D3007
22mmx3/4	730008	7D3008

### 102/3/4

Reducing Set for reducing type A ends to accept smaller pipe



Code		
Size	Brass	Chrome
10x8mm	733005	
15x8mm	733027	
15x10mm	733037	
15x12mm	733047	
22x15mm	733048	7D3100
28x15mm	733049	
28x22mm	733059	
35x15mm	733060	
35x22mm	733070	
35x28mm	733080	
42x15mm	733081	
42x22mm	733091	
42x28mm	733101	
42x35mm	733111	
54x15mm	733120	
54x22mm	733112	
54x28mm	733122	
54x35mm	733132	
54x42mm	733142	

### C103

Copper Cone for type A joints



Code		
Size	Brass	Chrome
8mm	860004	
10mm	860005	
15mm	860007	
22mm	860008	
28mm	860009	
35mm	860010	
42mm	860011	
54mm	860012	
3/4	860018	

### 103

Brass cone for type A joints



Code		
Size	Brass	Chrome
6mm	860043	
8mm	860044	
10mm	860045	
12mm	860046	
15mm	860047	
18mm	860013	
22mm	860048	
28mm	860309	
35mm	860050	
42mm	860051	
54mm	860052	

### 105

Type A Capnut



Code		
Size	Brass	Chrome
8mm	860064	
10mm	860065	860105
12mm	860066	860106
15mm	860097	860117
18mm	860067	
22mm	860068	860108
28mm	860069	860109
35mm	860070	817200
42mm	860071	
54mm	860072	

# TECHNICAL DATA

Working Temperatures and Pressures			
Medium	Service Temp up to °C	Maximum working pressure	
		Bar	PSI
Water or light mineral oils 8mm to 54mm	30	16	232
	65	10	145
	110	6	87
	120	5	72
Compressed Air non-shock 8mm to 28mm size only	30	7	100
Saturated steam	120	3	43
LPB 3 to 28mm sizes only	30	1	15
Natural Gas	60	5	73

Note: Chromium plated Type A compression fittings comply with the same criteria as un-plated fittings.

## GENERAL SPECIFICATION

Manufactured to EN 1254 (formerly BS 864/2), and carrying the prestigious Kite mark, Prestex 'Type A' compression fittings are suitable for mechanically joining copper or stainless steel tube by means of compressing a cone onto the tube without the application of heat.

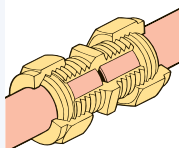
The range is designed for use with copper tube to BS EN 1057:1996 (formerly BS 2871:Part 1), BS 2871:Part 2, or stainless steel tube to BS 4127:1994. Fittings are available in a brass bodies, all with brass capnuts as standard. Sizes range from 8mm up to 54mm, covering a wide range of product alternatives including straights, elbows, tees, crosses and reducers to cope with all installation requirements.

### HOW TO MAKE A 'TYPE A' JOINT

**1.** Ensure that the fitting is the correct size for the pipe being used. Cut the pipe to length, making sure that the cut is square and the pipe is not deformed. Remove any burrs from the cut ends.

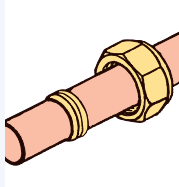
#### EITHER

**2a.** Insert the pipe into the fitting without removing the capnut and cone, ensuring that the cone is in the correct position and that the pipe makes firm contact with the stop in the body of the fitting.

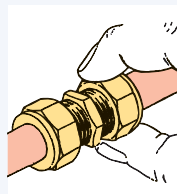


#### OR

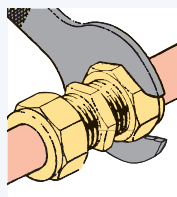
**2b.** Unscrew the capnut and cone from the fitting. Slide the capnut and cone onto the pipe, and insert the pipe into the fitting as far as the stop.



**3.** In both cases, tighten the capnut onto the fitting until the pipe cannot be rotated by hand. A drop of light machine oil on the threads will facilitate tightening (particularly on larger sizes).



**4.** Tighten the capnut with a good, well-fitting spanner, using the table below as a guideline taking into consideration any variations in installation conditions.



### \*EXPOSURE TABLE

Nominal pipe size	Number of turns
8mm	¾ to 1
10mm	¾ to 1
12mm	¾ to 1
15mm	¾ to 1
18mm	¾ to 1
22mm	¾ to 1
28mm	¾ to 1
35mm	1 to 1¼
42mm	1 to 1¼
54mm	1 to 1¼

#### Notes

1. Jointing compounds or sealants are not necessary with PRESTEX fittings; the use of these materials could impair the efficiency of the joint and may contravene local water regulations.
2. Over-tightening will not produce a better joint, and may lead to problems in service. Type A fittings as specified in EN 1254 are suitable for use at the pressures and temperatures in the table above.

## DESIGN CONSIDERATIONS

Stress corrosion cracking (SCC) is a phenomenon that occurs occasionally with brass compression fittings. It is almost always introduced during installation, either from over-tightening of fittings or contamination from a corrosive substance.

The usual corrosive substance involved in SCC is ammonia or ammoniacal compounds, which can be found in cleaning fluids, refrigeration gases, sewage waste products, building materials, insulating materials (especially foams) and flame and smoke retarding treatments. An essential ingredient in the SCC process is moisture. Moisture on the fitting or pipework allows the corrosive substance to collect and become more concentrated. This is a particular problem in chilled water installations, where insulating materials allow the condensed moisture to be retained and kept in close contact with the fitting surface.

**Pegler Yorkshire does not recommend the use of brass components in chilled water applications.**

Where all components upon which the integrity of the fitting is dependent, ones made from SCC resistant or immune materials, such as copper or gunmetal, are recommended. If compression fittings are used then they should be assembled exactly in accordance with our published instructions and securely bound by a moisture barrier such as Densotape® to prevent moisture build up on the fitting. The following installation practices should be adhered to when installing compression fittings in order to avoid SCC:

1. Do not overtighten brass components.
2. Use correctly fitting spanners.
3. Use a drop or two of light oil on the threads of fittings of sizes 35mm and above.
4. Avoid contaminating the threads or nuts with jointing compounds.

Minimise the risk of contamination from a potential corrosive substance. Wrapping susceptible fittings in a vapour barrier or applying impermeable paints can be helpful in preventing contact with a corrosive substance.



# Pegler Yorkshire

Follow us on



CONNECT  CONTROL

## UK ENQUIRIES

### UK SALES

Free Phone: 0800 156 0010

Free Fax: 0808 156 1011

Email: [uk.sales@pegler-yorkshire.co.uk](mailto:uk.sales@pegler-yorkshire.co.uk)

### TECHNICAL HELP

Free Phone: 0800 156 0050

Free Fax: 0808 156 1012

Email: [tech.help@pegler-yorkshire.co.uk](mailto:tech.help@pegler-yorkshire.co.uk)

### BROCHURE HOTLINE

Free Phone: 0800 156 0020

Free Fax: 0808 156 1011

Email: [info@pegler-yorkshire.co.uk](mailto:info@pegler-yorkshire.co.uk)

## INTERNATIONAL ENQUIRIES

### EXPORT

Tel: +44 (0) 1302 855 656

Fax: +44 (0) 1302 730 513

Email: [export@pegler-yorkshire.co.uk](mailto:export@pegler-yorkshire.co.uk)

**Tectite**

**XPress**

**Henco**

**Terrier**

**Meibes**

**Ballorex**

**Pegler**

**Prestex**

**Yorkshire**

**Endex**

**Kuterlite**

**Francis Pegler**

**Performa**

## HEAD OFFICE

**Pegler Yorkshire Group Limited**

St. Catherine's Avenue, Doncaster,  
South Yorkshire DN4 8DF, England

Tel: +44 (0) 844 243 4400

Fax: +44 (0) 844 243 9870

Email: [info@pegler-yorkshire.co.uk](mailto:info@pegler-yorkshire.co.uk)

[www.pegler-yorkshire.co.uk](http://www.pegler-yorkshire.co.uk)

Registered in England Company No. 00401507

Registered Office: Haigh Park Road, Stourton,  
Leeds, West Yorkshire, LS10 1RT England

All brand names and logo styles are registered trademarks. Maintaining a policy of continual product development, Pegler Yorkshire reserves the right to change specifications, design and materials of products listed in this publication without prior notice