

KPU Washbasin Fixing Set

Easy-to-install washbasin fixings giving exceptional performance in solid base materials



Product information

Features and benefits

- Flanged nuts and collar sleeves made of high-resistant for ageing and chemicals material guarantee a long-lasting fixing.
- Cover caps with a high-quality chrome finish ensure the fixture remains visually attractive for a long period of time.
- Complete fixing set allows quick and easy installation.
- Anti-rotation fins prevent spinning during tightening of the screw.
- Engineered grip feature for extra holding power.
- Two-way expansion mechanism provides a strong anchorage in solid base materials.

Applications

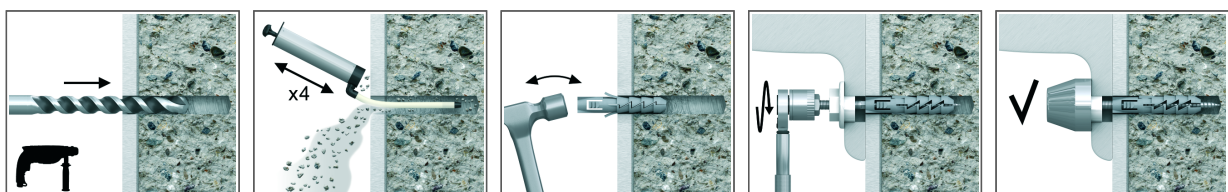
- Washbasin installation

Base materials

Suitable for use in

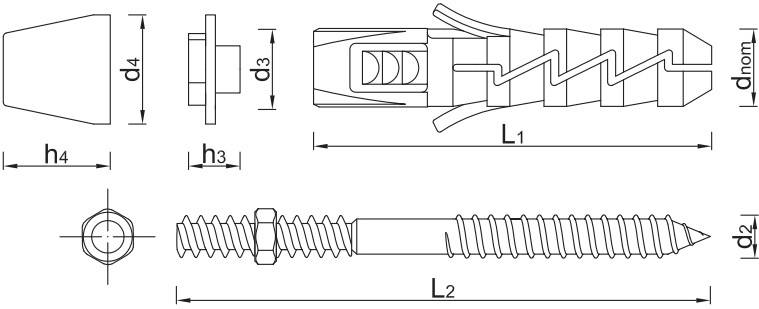
- Concrete
- Solid Concrete Block
- Solid Brick
- Solid Sand-lime Brick

Installation guide



1. Drill a hole of required diameter.
2. Insert FIX plug into hole and tap home.
3. Insert screw (with plastic washer) into plug through fixture and tighten the nut. Press cover cap into position over head of fixing

Product information



| Size | Product Code |
|------|--------------|
|------|--------------|

Installation data

| Size | | | Ø10 | Ø12 | Ø14 |
|------------------------------|------------------|------|-----|-----|-----|
| Fixing diameter | d | [mm] | 10 | 12 | 14 |
| Hole diameter in substrate | d _o | [mm] | 10 | 12 | 14 |
| Min. hole depth in substrate | h _o | [mm] | 60 | 70 | 80 |
| Installation depth | h _{nom} | [mm] | 50 | 60 | 70 |
| Min. substrate thickness | h _{min} | [mm] | 80 | 90 | 100 |
| Min. spacing | s _{min} | [mm] | 50 | 60 | 70 |
| Min. edge distance | c _{min} | [mm] | 50 | 60 | 70 |

Product commercial data

| Size | Product Code |
|------|--------------|
|------|--------------|