



Note, one or more warnings are present in this procedure



Special tooling required	
Positioning tool for supports battery	Ms. 2024



WARNING

- To avoid all risk of damage to the systems, apply the safety and cleanliness instructions and operation recommendations before carrying out any repair:
 - Vehicle: [Precautions for the repair](#) .

ADJUSTMENT

1. ADJUSTMENT PREPARATION OPERATION



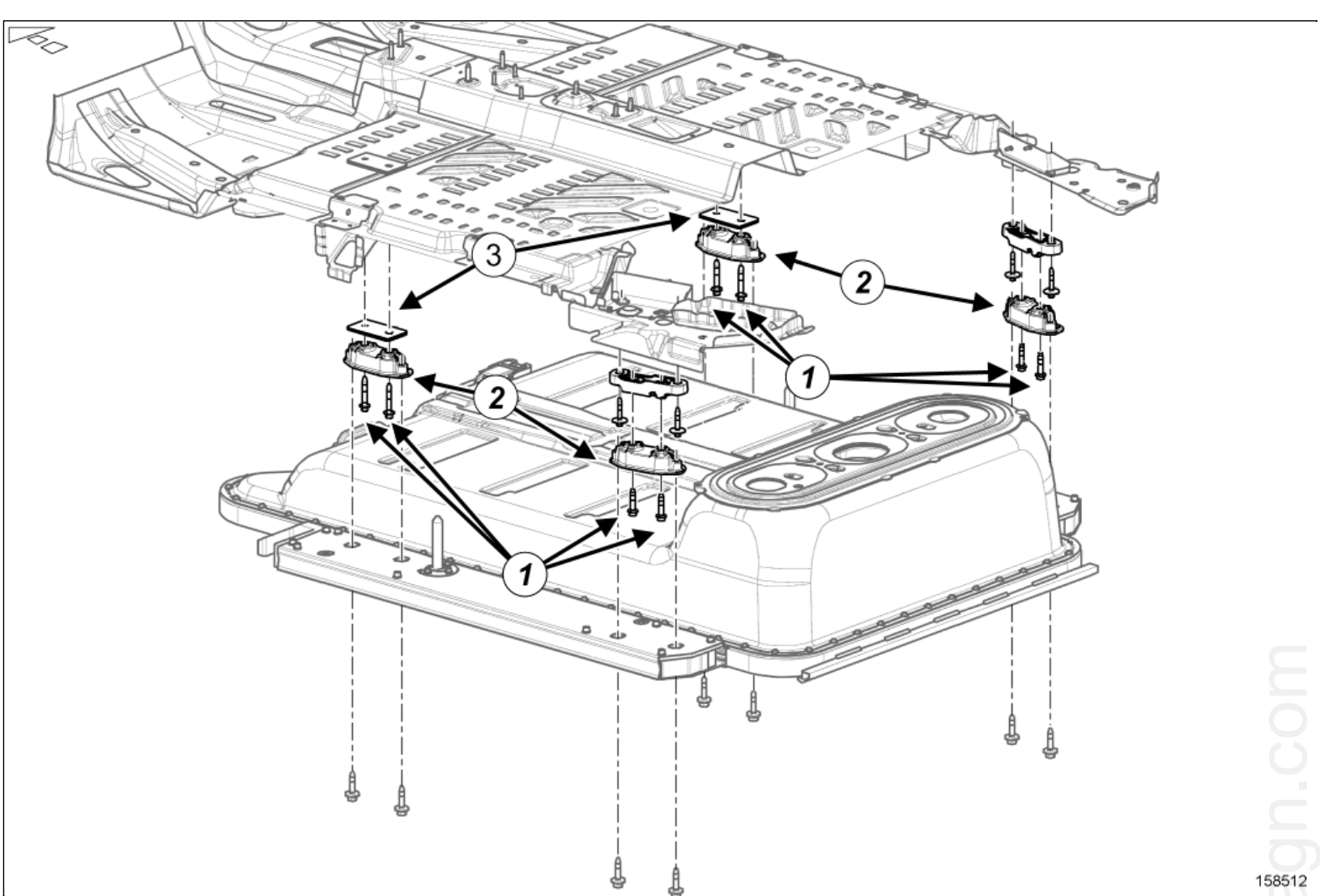
WARNING

DANGER: HIGH VOLTAGE VEHICLE.

Risks of serious burns or electric shocks that may prove fatal.

Before carrying out any work on the vehicle, it is essential that you follow the instructions regarding vehicle lockout. This work must be carried out by an employee who is qualified and authorised to work on a high-voltage onboard network [Vehicle: Precautions for the repair](#) .

- Lockout the vehicle [Vehicle: Lockout - Removal of lockout](#) .
- Remove the traction battery [Traction battery assembly: Removal - Refitting](#) .



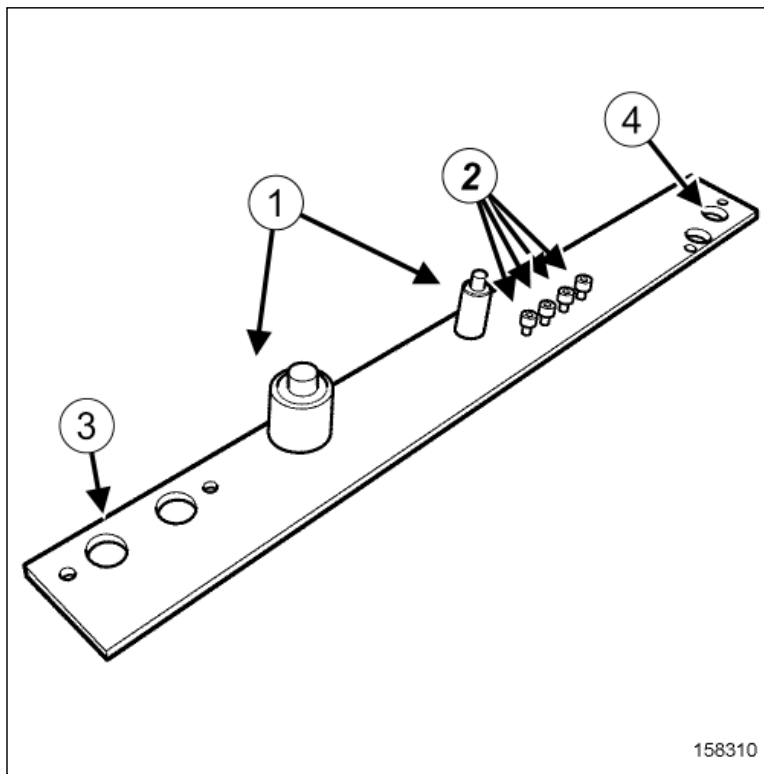
158512

■ Remove:

- the filtering terminal screws(1) ,
- the filtering terminals(2) ,
- the front spacers(3) .

MS. 2024

cardiagn.com



- (1) centring pins
- (2) screws of the tool
- (3) front side
- (4) rear side

Note:



Use both sides of the toolPositioning tool for supports battery(Ms. 2024) :

- for the left-hand side: side of the tool marked L,
- for the right-hand side: side of the tool marked R.

1- FOR THE ADJUSTMENT OF THE FILTERING TERMINAL ON THE LEFT-HAND SIDE

- Fit the centring pins on the toolPositioning tool for supports battery(Ms. 2024) on the face L.

2- FOR THE ADJUSTMENT OF THE FILTERING TERMINAL ON THE RIGHT-HAND SIDE

- Fit the centring pins on the toolPositioning tool for supports battery(Ms. 2024) on the face R.

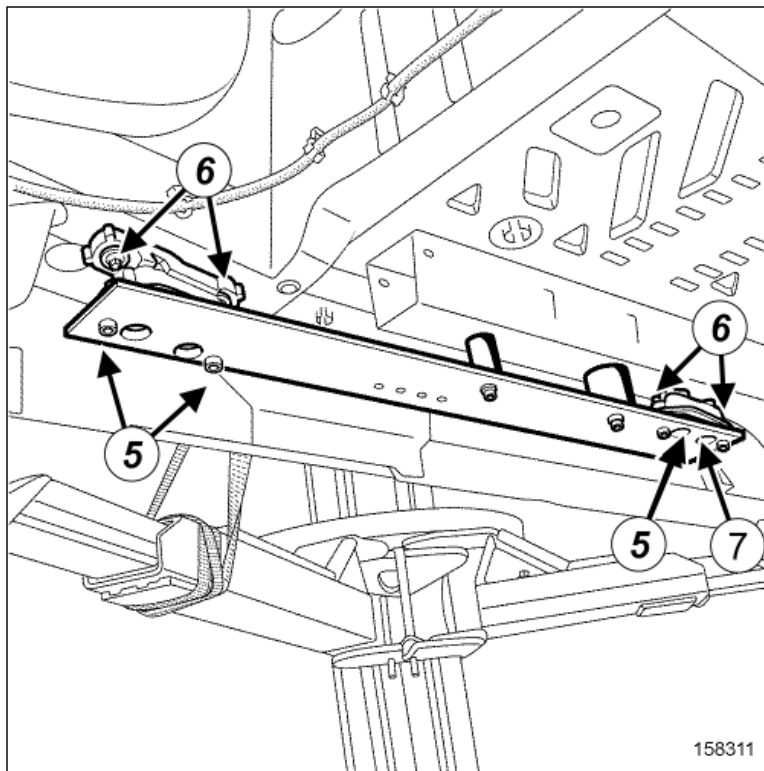
2. ADJUSTMENT OPERATION

- Refit filtering terminals.
- Fit without tightening the filtering terminal screws on the vehicle.

Note:



The filtering terminal must be free.



158311

- Fit the toolPositioning tool for supports battery([Ms. 2024](#)) on the vehicle.
- Fit without tightening the screws of the tool(5) on the filtering terminals.
- Refit the the filtering terminal screws(6) on the vehicle.
- Torque tighten the filtering terminal screws62 N.m(5) .
- Torque tighten the filtering terminal screws21 N.m(7) .
- Remove:
 - the screws(5) of the toolPositioning tool for supports battery([Ms. 2024](#)) ,
 - the toolPositioning tool for supports battery([Ms. 2024](#)) .

3. FINAL OPERATION

- Refit the traction battery[Traction battery assembly: Removal - Refitting](#) .
- Remove the lockout of the vehicle[Vehicle: Lockout - Removal of lockout](#) .



Repair-14x02x01x50-01x67-1-2-1.xml



XSL version : 3.02 du 22/07/11