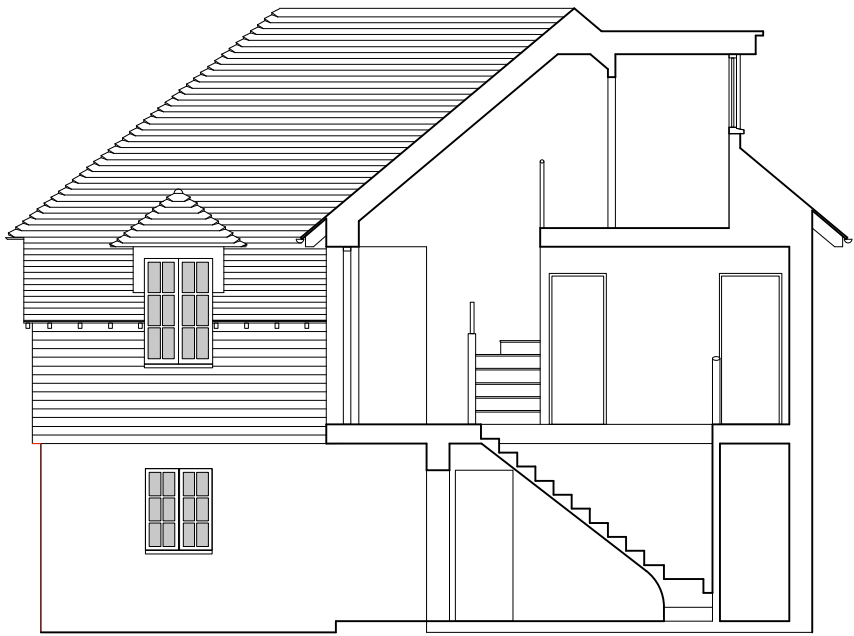




Type C  
west elevation



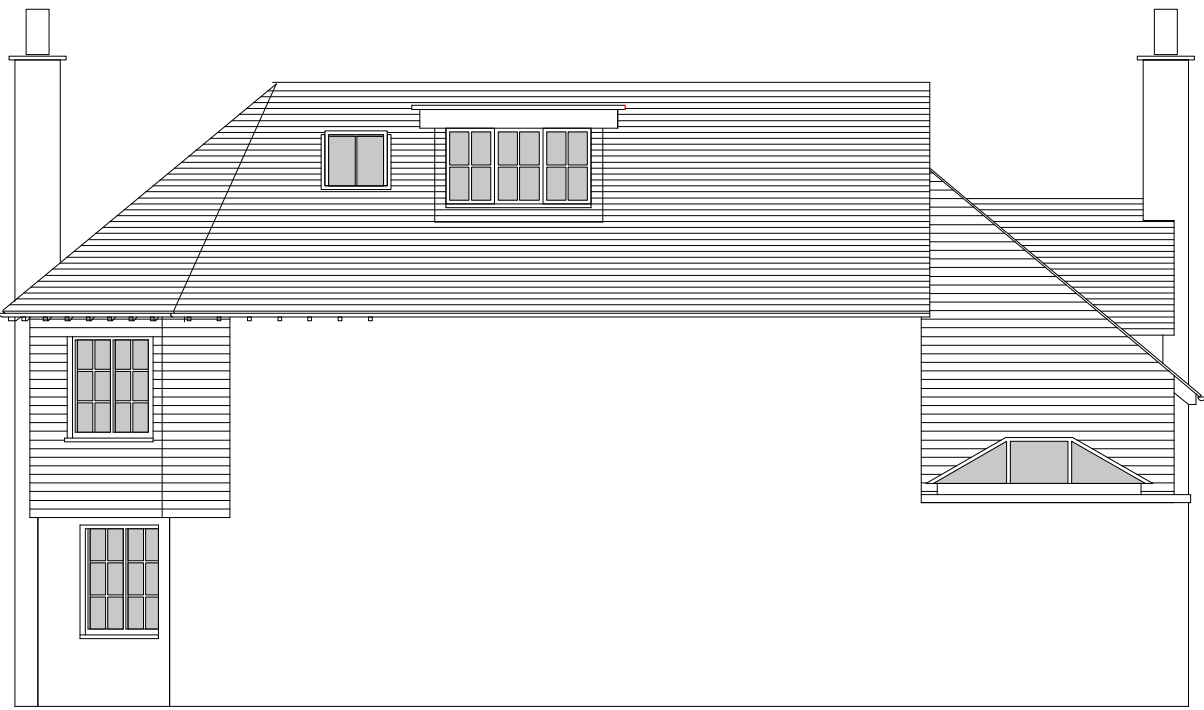
Type C  
north/south elevation



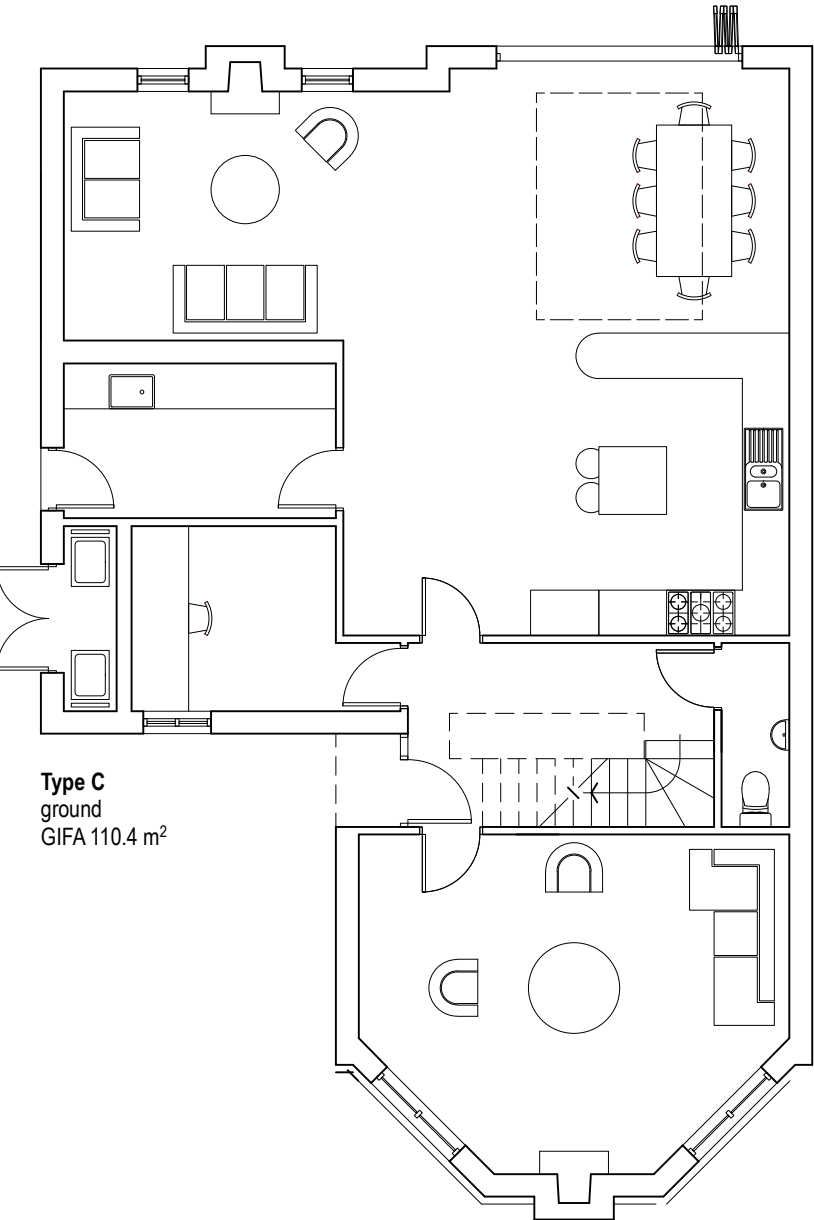
Type C  
section through entrance hallway



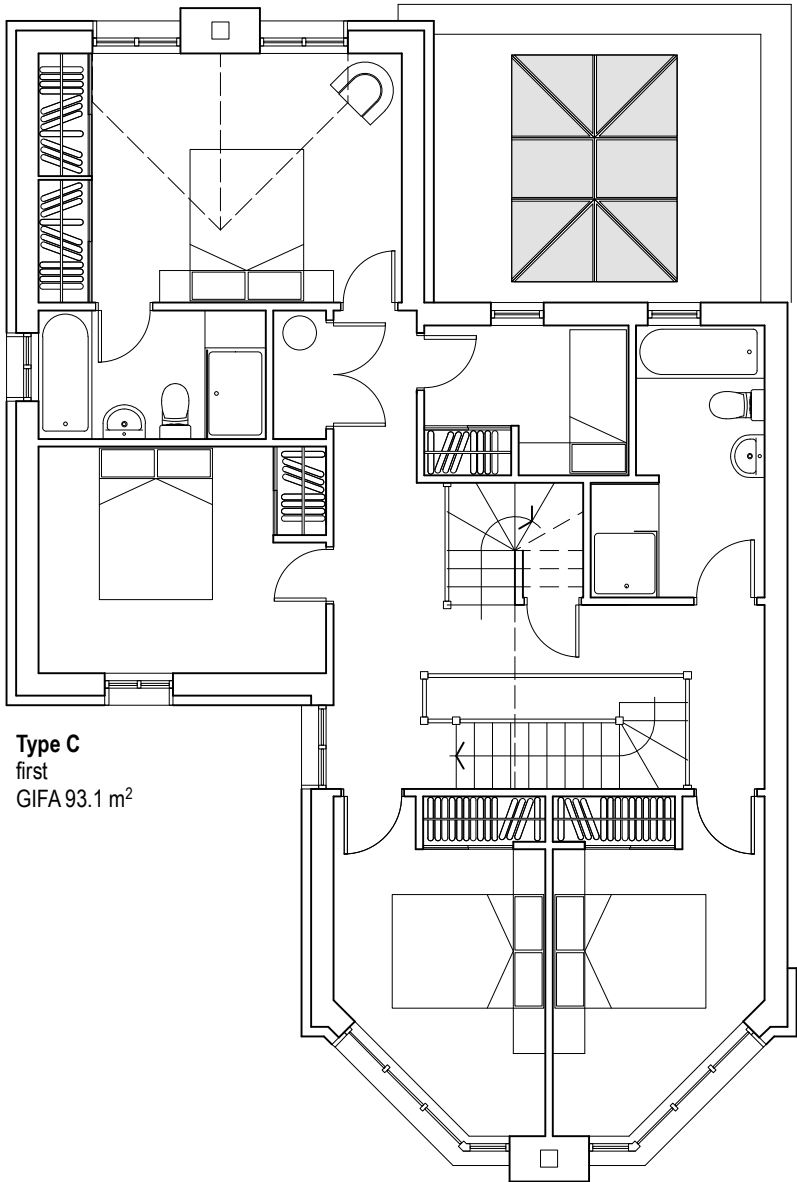
Type C  
east elevation



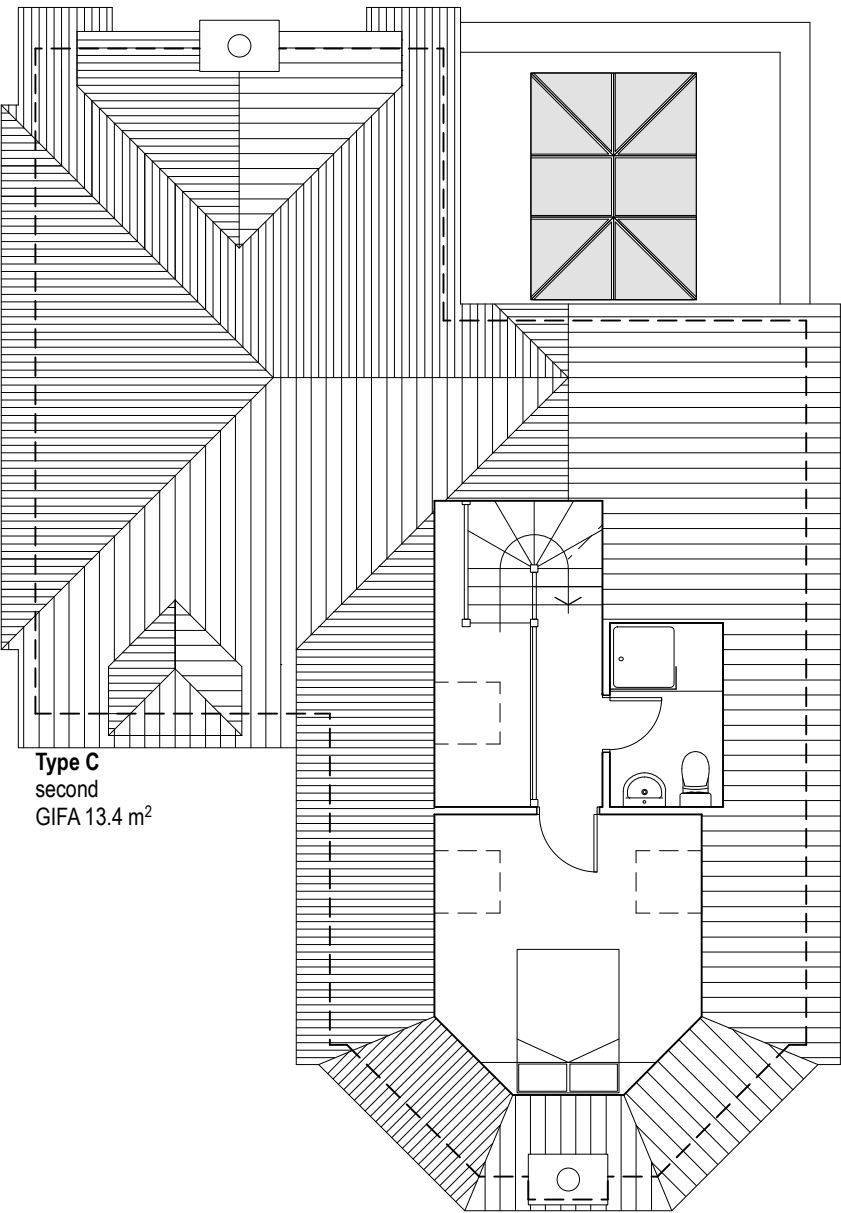
Type C  
north/south elevation



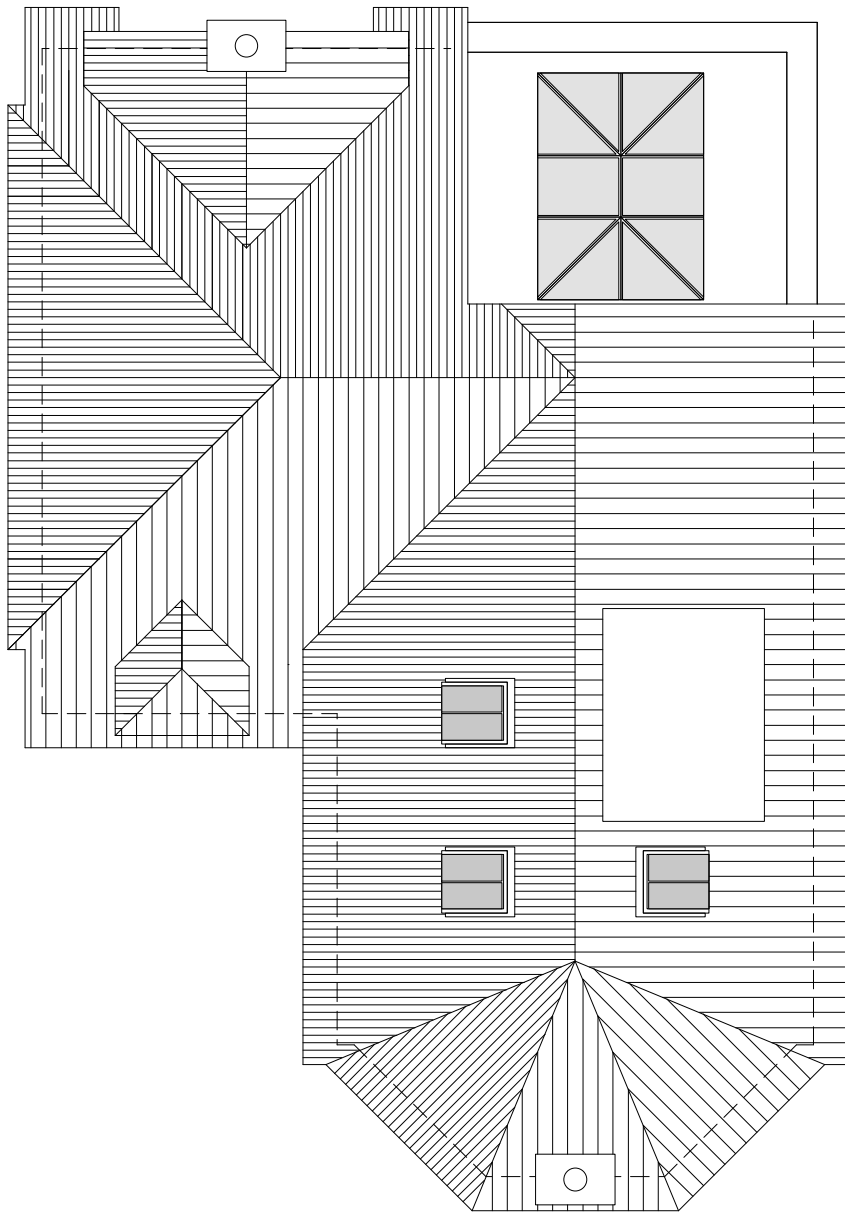
Type C  
ground  
GIFA 110.4 m<sup>2</sup>



Type C  
first  
GIFA 93.1 m<sup>2</sup>



Type C  
second  
GIFA 13.4 m<sup>2</sup>



COPYRIGHT BY WRITTEN PERMISSION ONLY

refer to all relevant detail drawings before undertaking any work

read this drawing in conjunction with Consultant's relevant drawings

verify all dimensions on site before undertaking any work or preparing any shop drawings

refer any discrepancies to the architect immediately

refer to the architect before undertaking work or giving instructions if in doubt

notes



Key to materials

- A Facing brick
- B Clay plain tile hanging
- C Clay plain tile
- D Clear double glazed timber windows
- F Conservation roof window
- G Clear double glazed aluminium bifold doors

revisions

A 16/09/21 Glazing bars added, east and west first floor windows altered.

CLIVE DAVIS 137 HARROWDENE GARDENS  
TEDDINGTON TW11 0DN 07766 912382  
info@clivedavisarchitect.co.uk

project  
Beech Hill Stores redevelopment

drawing  
House type C

drawing number  
GU35 8HU TP05  
scale  
1:100 at A2

date  
JUL 2021

revision A